

# Automated Sample Preparation for the Monitoring of Pharmaceutical and Illicit Drugs by LC-MS/MS

## AB SCIEX Triple Quad™ 4500 LC/MS/MS system and Beckman Coulter Biomek 4000 Workstation

Lekh Sharma<sup>1</sup>, Michael Kowalski<sup>2</sup>, Michael Jarvis<sup>3</sup>, Amy Gibson<sup>2</sup> and Navaline Quach<sup>2</sup>

<sup>1</sup>Vision Laboratories, LLC, Chattanooga, TN, USA; <sup>2</sup>Beckman Coulter Life Sciences, Indianapolis, IN, USA;

<sup>3</sup>SCIEX, Concord, ON, Canada

### Abstract

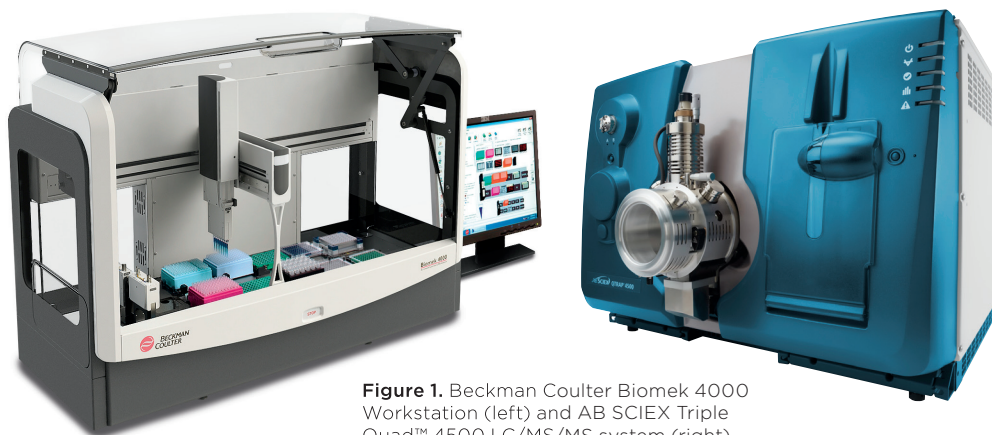
Automated sample preparation enables highly reproducible quantitative analyses while meeting the increased efficiency needs often required for sample processing in laboratories. This application note describes results obtained using a liquid handling-based automation system for the sample preparation of compounds to be analyzed by LC-MS/MS and applied to the monitoring of multiple classes of pharmaceutical and illicit drugs. This screen panel contains 56 compounds that could be identified and quantified over a wide range of concentrations from 0.5X to 10X the cut-off value. In addition, the large majority of the compounds could be analyzed with accuracy over 80% and CV under 15%. This method provides automated capabilities for analytical laboratories that currently routinely process samples manually for the monitoring of these drugs in biological fluids.

As the number of samples to be analyzed increases, the bench time required to process these samples, as well as the opportunity for errors in processing also increases. Automating the sample preparation prior to analysis by LC-MS/MS can increase the possible throughput, reduce the active bench time required to prepare even small numbers of samples, and minimize the number of human intervention points, thereby minimizing opportunities for error and maintaining the integrity of sample information. Automation can also eliminate the variability that is introduced by multiple technologists processing samples in slightly different fashions.

In this work, we have utilized a Biomek 4000 Workstation (Figure 1) to automate the sample processing for the forensic screening of pharmaceutical drugs in human urine on an AB SCIEX Triple Quad™ 4500 LC/MS/MS system.

### Introduction

Liquid chromatography-tandem mass spectrometry provides laboratories with a powerful tool for accurate, multiplexed analysis of large panels of compounds. As a consequence, this technology is being increasingly applied to the forensic screening of urine samples, to monitor for the potential diversion of prescription pharmaceutical drugs.



**Figure 1.** Beckman Coulter Biomek 4000 Workstation (left) and AB SCIEX Triple Quad™ 4500 LC/MS/MS system (right).

This method enabled the analysis of 56 compounds across multiple drug classes, including the opiates, opioids, benzodiazepines, amphetamines, tricyclic antidepressants, barbiturates, and illicit drugs cannabis (THC-COOH), synthetic cannabinoids and bath salts. Standard curves were generated across 6 concentration levels, ranging from 0.5x – 10x the cut-off levels (Table 3), and excellent accuracy, precision, and curve linearity was observed.

## Materials and Methods

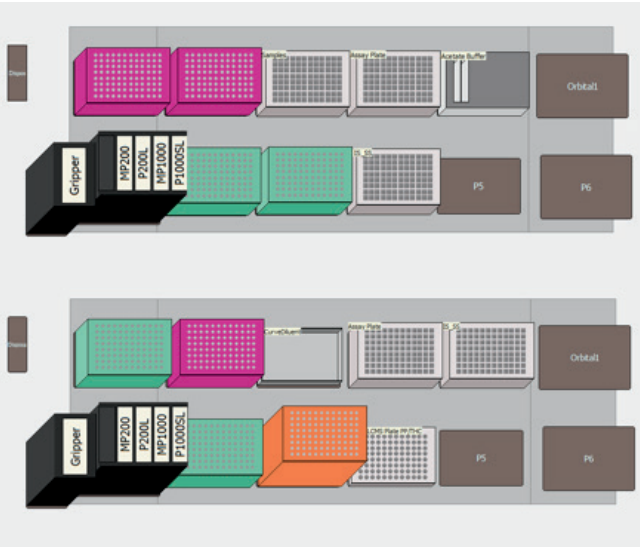
### Automated Sample Preparation

The automated sample preparation protocol is described in Table 1. Briefly, pre-cleared urine controls and samples were combined with acetate buffer and beta-glucuronidase. Following automated mixing, the plate was removed from the deck, capped, and heated to 55°C for 2 hours. Following incubation, curve diluent was added to each well and the plate was centrifuged to clear any precipitate in the samples. 200 µl of the supernatant was transferred to a new plate and analyzed by LC-MS/MS.

This workflow was automated on a Biomek 4000 Workstation that utilizes single and 8-channel pipetting tools. In the software, users highlight the plate wells that contain samples or controls to initiate sample processing. To accelerate the sample preparation, reagents were added to full plate columns using the

multichannel tools while partial columns (if any) were transferred using the single channel tool. The volumes of reagents and standards were also set as variables to enable easy alterations during initial optimization studies. The Biomek 4000 deck layouts for pre- and post-incubation steps are illustrated in Figure 2.

Upon completion of the methods text files are generated to ensure data such as sample barcodes are maintained throughout the workflow, and these barcodes can be pasted into an “Analyst batch” for LC-MS/MS analysis.



**Figure 2.** Software representation of the Biomek 4000 deck demonstrating the labware utilized for preincubation (top) and postincubation (bottom) automated methods.

**Table 1.** Automated sample preparation protocol for LC-MS/MS analysis of human urine samples

<b>Step 1</b>	Barcoded urine samples are added to a deepwell plate (“Samples”) and precleared by centrifugation at 4500 rpm in an Allegra X-30R (Beckman Coulter).	Manual
<b>Step 2</b>	100 µL of samples, calibrators, and QC controls are transferred to a deepwell plate (“Assay”).	Automated
<b>Step 3</b>	50 µL of 0.1 M pH 4 acetate buffer is added to each well.	Automated
<b>Step 4</b>	25 µL of β-glucuronidase (100,000 U/mL) is added to each well and the plate is shaken to mix.	Automated
<b>Step 5</b>	Plate is sealed and incubated in a water bath at 55°C for 2 hours.	Offline
<b>Step 6</b>	50 µL of internal standard is added to each well except for the double blank urine control, which receives 50 µL water.	Automated
<b>Step 7</b>	750 µL of curve diluent is added to each well and the plate is shaken to mix.	Automated
<b>Step 8</b>	Samples are centrifuged at 4500 rpm in an Allegra X-30R, for 15 minutes.	Offline
<b>Step 8</b>	200 µL of supernatant are transferred to a flat-bottomed plate (“LCMS”) for analysis.	Automated
<b>Step 10</b>	Analysis by LC-MS/MS system.	

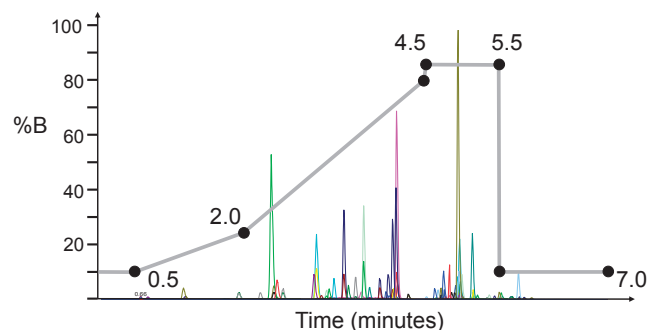
## Analyses by LC/MS/MS

HPLC separation was performed using a Shimadzu Prominence LC-20XR system and mass spectrometric detection was performed using the AB SCIEX Triple Quad™ 4500 LC/MS/MS system (Figure 1), equipped with Turbo V™ ionization source (Temperature = 600°C; Gas1 = 60; Gas2 = 50; Curtain Gas = 25). The temperature of the autosampler was set at 15°C.

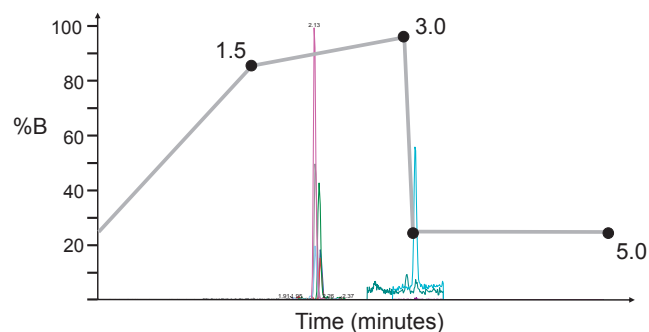
The prepared (hydrolyzed and cleaned) samples were injected onto the system, and the chromatographic separation was achieved using a Phenomenex Kinetex Biphenyl (50x3.0mm, 2.6µm) column, at 40°C. The separation employed a binary gradient of mobile phases A (HPLC-grade water with 0.1% formic acid) and B (methanol with 0.1% formic acid). The LC-MS/MS data acquisition was done using the Analyst 1.6.2 software. Multiquant 3.0.1 software was used for data processing, and reporting. Two MRM transitions were used to monitor each analyte, and a single MRM transition was used to monitor each internal standard. The Scheduled MRM™ algorithm was employed, to maximize the acquisition dwell time for each analyte and thereby improve data quality.

Each sample was injected twice: the first injection utilized an LC-MS/MS method that was optimized for the analysis of those analytes that ionize preferentially in positive electrospray ionization (ESI) mode (including the opiates, opioids, benzodiazepines, amphetamines, tricyclic antidepressants, and other illicit drugs); the second injection utilized an LC-MS/MS method that was optimized for the analysis of those analytes that ionize preferentially in negative mode (Butalbital, Phenobarbital, and THC-COOH). For the positive ESI analytes (Ion Spray voltage = 2500), 10µl of sample were injected and run at a flow rate of 0.6mL/min for a 7 min run time with the following time profile for mobile phase B: 0-0.5 minute hold at 10% B; 0.5-2.0 minute ramp from 10-25% B; 2.0-4.5 minute ramp from 25-80% B; 4.5-5.5 minute hold at 85% B; 5.5-7.0 minute hold (re-equilibrate) at 10% B (Figure 3). Each analyte was monitored during a 50-second detection window centered on the expected Retention Time. For the negative ESI analytes (Ion Spray voltage = -4500), 20µL of sample were injected

and run at a flow rate of 0.5 mL/min for a 5 min run time with the following profile for mobile phase B: 0-1.5 minute ramp from 25-85% B; 1.5-3.0 minute ramp from 85-95% B; 3.1-5.0 minute hold (re-equilibrate) at 25% B (Figure 4). Each analyte was monitored during a 30-second detection window centered on the expected Retention Time.



**Figure 3.** HPLC gradient (% Mobile Phase B) for the analysis of 53 target compounds on the AB SCIEX Triple Quad™ 4500 LC/MS/MS system, using positive electrospray ionization (ESI), with a run-time of 7 minutes. Overlaid is a representative chromatogram displaying all analytes at their respective cut-off concentration levels.



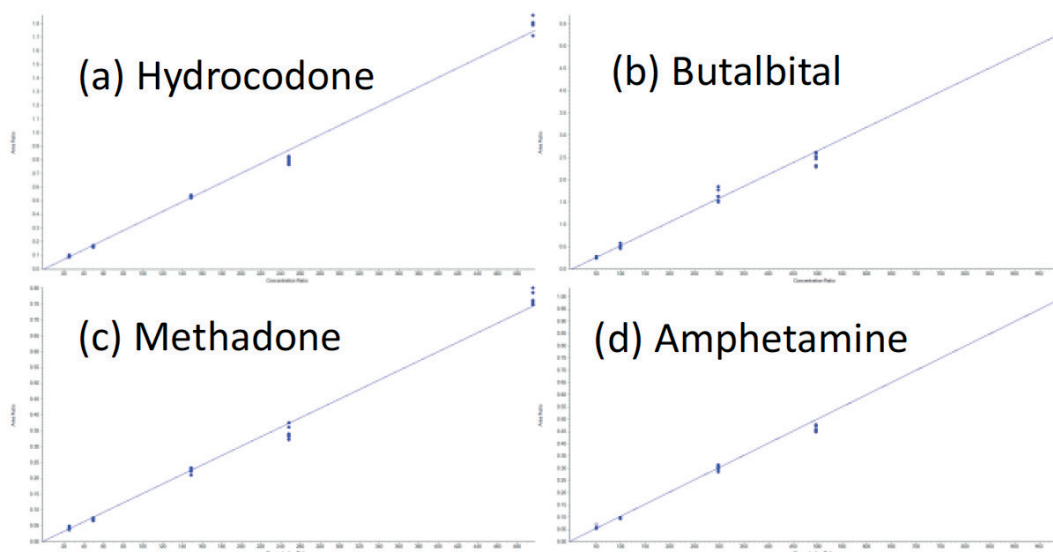
**Figure 4.** HPLC gradient (% Mobile Phase B) for the analysis of 3 target compounds on the AB SCIEX Triple Quad™ 4500 LC/MS/MS system, using negative electrospray ionization (ESI), with a run-time of 5 minutes. Overlaid is a representative chromatogram displaying all analytes at their respective cut-off concentration levels.

## Results

A full plate of 96 samples and controls can be processed in just over three hours, including the two hour incubation step and offline centrifugation. The reproducibility of the automated sample preparation protocol was assessed by preparing and analyzing replicates (n=6) of each calibration standard for the 56 target analytes. A total of 6 concentration levels were prepared and analyzed, across a concentration range from 0.5x – 10x the cut-off levels. The method displayed good sensitivity, accuracy, precision, and linearity for all analytes. Representative calibration curves are shown in

**Figure 5.**

Representative calibration curves plotting Area Ratio (Y-axis) vs. Concentration Ratio (X-axis) for (a) Hydrocodone, (b) Butalbital, (c) Methadone, and (d) Amphetamine. The curves demonstrate the precision and linearity of the analysis.



**Figure 6.**

Representative chromatograms at the cut-off level for (a) Hydrocodone, (b) Butalbital, (c) Methadone, and (d) Amphetamine, demonstrating the excellent sensitivity of this analysis.

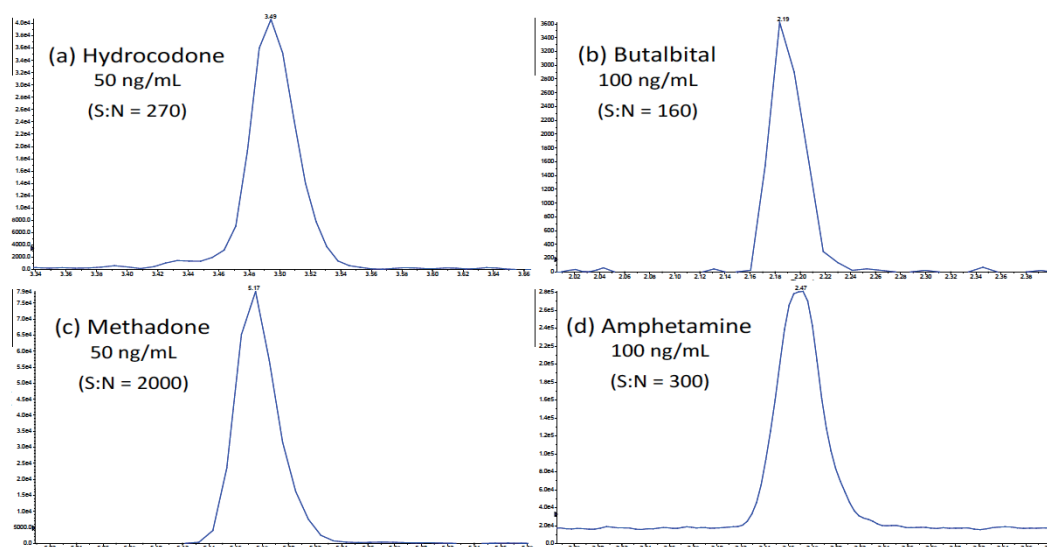


Figure 5 for (a) Hydrocodone, (b) Butalbital, (c) Methadone, and (d) Amphetamine. Representative chromatograms at the cut-off level are displayed in Figure 6, for each of these four analytes, demonstrating the excellent sensitivity of this method. Table 3 shows the average accuracy and coefficient of variation (CV) across the six detection levels for the 56 analytes. The average accuracies ranged from 89% to 109%. The average CVs were below 18% for all analytes, with 49 out of 56 analytes having average CVs below 10%. The average accuracy at each calibration level across all 56 analytes ranged from 92% to 102%, as shown in Table 2, with CVs below 11% at the lowest calibrator level (0.5X cut-off). From the 336 data points that were analyzed (56 compounds,

at 6 different concentrations), 98% displayed accuracy over 80% and 92% displayed CVs under 15% (data not shown).

**Table 2.** Average CVs and accuracies at each level of the calibration curve, across 56 analytes.

FOLD CUTOFF VALUE	AVERAGE ACCURACY	AVERAGE CV (%)
0.5	101.4	10.7
0.75	92.7	8.4
1	93.6	6.6
3	101.9	5.3
5	92.6	6.3
10	100.6	4.9

## Conclusion

In this study, a successful application of an automated sample preparation protocol for the analyses of 56 drug compounds in urine by LC-MS/MS has been presented. The Beckman Coulter Biomek 4000 Workstation was used to prepare the calibration curves and urine samples for analysis. The AB SCIEX Triple

Quad™ 4500 LC/MS/MS system was used for the identification and quantification of analytes in the samples. Overall, this automated method offers a simple, rapid, accurate and reproducible solution for the quantitative analysis of pharmaceutical and illicit drug compounds that are still routinely processed manually in analytical laboratories.

**Table 3.** Average accuracy and CV values for each of the 56 analytes across all points on the calibration curve (0.5X-10X the cut-off level).

COMPOUND NAME	CUTOFF VALUE (NG/ML)	AVERAGE ACCURACY	AVERAGE CV (%)	COMPOUND NAME	CUTOFF VALUE (NG/ML)	AVERAGE ACCURACY	AVERAGE CV (%)
6-MAM	10.0	95.2	8.1	MDMA	100.0	98.4	4.8
7-Amino-clonazepam	25.0	96.5	6.3	MDPV	20.0	96.0	6.8
α-hydroxyalprazolam	50.0	93.7	8.1	Meperidine	50.0	97.9	3.7
Alprazolam	50.0	93.9	7.2	Mephedrone	20.0	99.8	4.8
Amitriptyline	100.0	95.7	4.9	Meprobamate	100.0	97.9	17.8
Amphetamine	100.0	96.4	2.7	Methadone	50.0	96.2	5.6
Benzoylcegonine	50.0	96.1	4.2	Methamphetamine	100.0	98.2	6.6
Buprenorphine	20.0	99.8	11.6	Methylphenidate	100.0	97.1	6.9
Butylone	20.0	96.9	6.3	Midazolam	50.0	98.7	7.8
Clonazepam	50.0	94.2	7.6	Morphine	50.0	96.7	4.1
Codeine	50.0	96.1	7.5	Naloxone	50.0	93.4	6.9
Cotinine	50.0	97.5	2.2	Norbuprenorphine	20.0	98.7	17.8
Cyclobenzaprine	100.0	96.6	5.1	Nordiazepam	50.0	96.9	8.0
Desipramine	100.0	98.6	6.0	Norfentanyl	2.0	95.5	5.2
Diazepam	50.0	108.8	15.9	Norhydrocodone	100.0	97.1	6.7
EDDP	50.0	99.5	5.3	Normeperidine	50.0	98.1	4.3
Fentanyl	2.0	94.3	7.2	Noroxycodone	100.0	98.3	6.2
Flunitrazepam	50.0	105.4	12.9	Oxazepam	50.0	94.0	8.6
Fluoxetine	100.0	93.4	11.4	Oxycodone	50.0	97.2	10.0
Flurazepam	50.0	89.0	9.9	Oxymorphone	50.0	98.3	5.0
Gabapentin	500.0	96.5	3.1	Pregabalin	500.0	97.6	3.3
Hydrocodone	50.0	97.8	3.7	Tapentadol	25.0	94.8	4.5
Hydromorphone	50.0	97.0	3.3	Temazepam	50.0	100.2	7.1
Imipramine	100.0	95.7	7.7	Tramadol	50.0	97.7	4.6
JWH018-4-hydroxypentyl	20.0	97.2	5.0	Zolpidem	100.0	95.7	6.9
JWH018-5-hydroxypentyl	20.0	96.7	6.4	Butalbital	100.0	100.0	7.6
Lorazepam	50.0	95.5	9.3	Phenobarbital	100.0	98.9	3.5
MDA	100.0	96.2	9.5	THC-COOH	10.0	99.8	10.1