

Simultaneously reducing your API cost of goods and carbon footprint

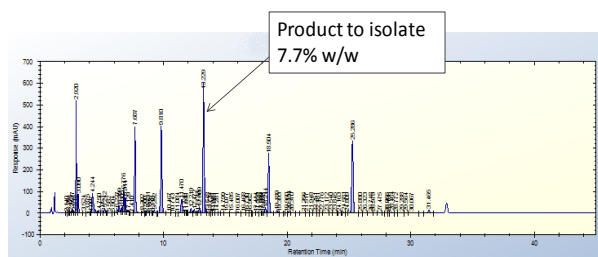
Process liquors after first crop crystallization can contain up to 10% of the target high value active pharmaceutical ingredient (API), sometimes even as high as 15%. This previously lost material can now be recovered at high purity and reintroduced into the process prior to crystallization step, through the use of High Performance Continuous Extraction technology.

This provides the following process benefits:

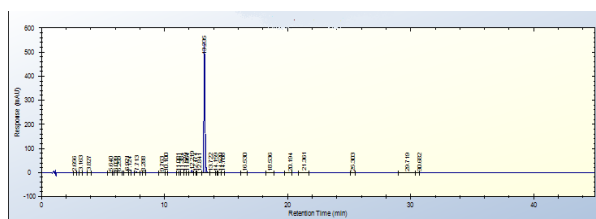
- Cost effective supply of high quality material
- Reduces the COGS of API produced by improving overall manufacturing efficiency of the production facility
- Eliminates the cost of waste disposal improving the green credentials of the production facility



Input
material



Output
material
(combined
fractions)



Typical waste stream and product recovery analysis

Dynamic Extractions provides a GMP standard toll refining service that will take your process waste streams, recover the API at high purity - the example shown is >98% pure - and return it to you for reintroduction into your process stream. The high purity API can be returned within 1 to 3 weeks, saving 80% of the extra batch costs required to complete processing.

This service offering is a result of a 3 year industry funded project that was supported by both GSK and Pfizer. A toll refining offering allows access to the technique with minimal risk to the customer. Future on-site deployment of can be assessed for supply of equipment for on-site installation.

Dynamic Extractions Ltd

890 Plymouth Road,
Slough,
Berkshire SL1 4LP
United Kingdom

Phone: +44(0) 1753 696979
Fax: +44(0) 1753 696976
E-mail: info@dynamicextractions.com

Dynamic Extractions Inc

11 Deer Park Drive
Monmouth Junction
New Jersey 08852
USA

Phone: +1 732 230 3060
E-mail: info@dynamicextractions.com